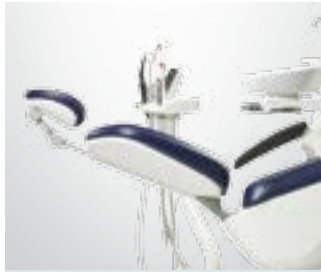


Comprehensive product portfolio



Treatment centers



Instruments



Laser



Hygiene



3D and Panoramic x-rays



Intraoral x-rays



Intraoral sensors



Phosphor plate scanner

FONA
CLOSER TO YOU



FONA, the most exciting new brand in dental

FONA is a fast-growing, global and dynamic brand, continuously developing its comprehensive product portfolio according to international quality standards. Ensuring excellent price/performance ratio, FONA provides a full range of valuable, reliable and user focused equipment for everyday dentistry. Though still a young brand, FONA has in-depth dental competence through its membership in the Sirona Group. With manufacturing sites in three continents and local support through a rapidly expanding international sales and service team that understands your needs, FONA is truly CLOSER TO YOU.

Copyright FONA Dental, s.r.o., All rights reserved, subject to technical changes and errors in the text, BR0008 v1, EN, 20130221

FONA
CLOSER TO YOU

headquarters:
FONA Dental s.r.o.
Ševčenkova 34
SK - 85101 Bratislava
Slovak Republic
info@fonadental.com
www.fonadental.com

Dealer:

THE RIGHT CHOICE FOR YOUR PRACTICE
Panoramic X-rays

FONA Panoramic X-rays

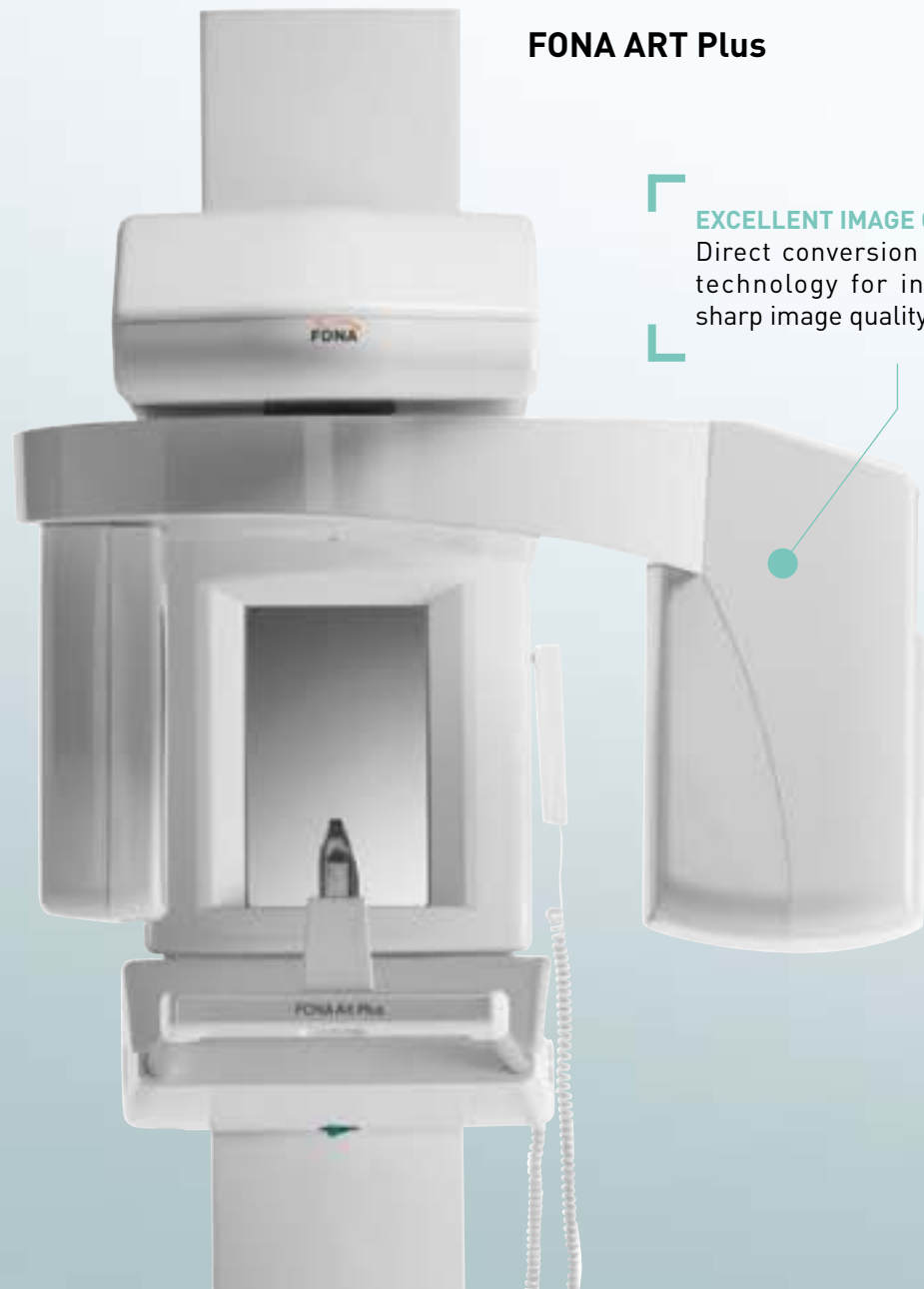
Traditional, practice oriented or technology driven
what's your panoramic preference?

Whether you prefer working the traditional way, want to go digital but without technological gimmicks, or are looking for the technologically advanced solution that gets the most out of your panoramic images, FONA has the solution you are looking for! Whichever model you chose, you will have a well designed, compact, reliable and high value for money unit that delivers excellent panoramic and cephalometric image quality for your daily diagnostics.



FONA ART Plus

EXCELLENT IMAGE QUALITY
Direct conversion CdTe-CMOS technology for incomparably sharp image quality.



TRADITIONAL SOLUTION
Reliable and proven solution for traditional film based practices.

FONA XPan



FONA XPan DG

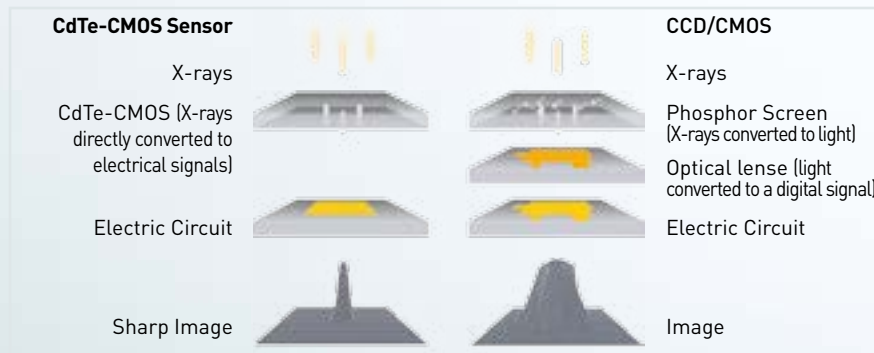
COST EFFICIENT
Practice oriented digital imaging with excellent price-performance ratio delivering all you need for daily diagnostics.



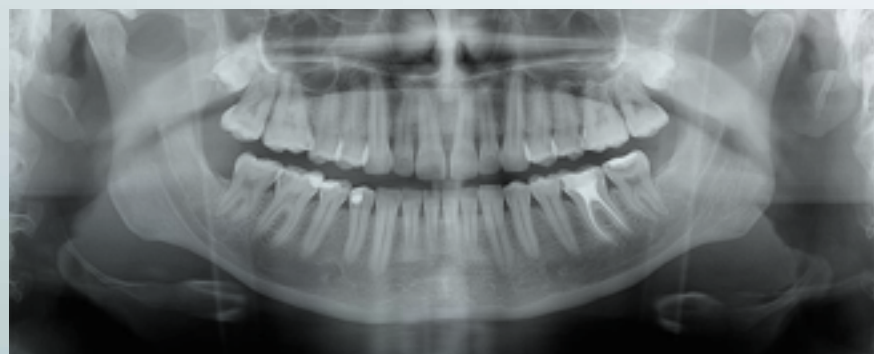
FONA ART Plus & FONA ART Plus C

FONA ART Plus is the new digital panoramic system with unique CdTe-CMOS sensor technology.

It combines outstanding image quality, sharpness and contrast resolution with advanced diagnostic tools. FONA ART Plus gives you extraordinary image quality, independently of whether you chose Pan Ceph or Pan only solution.



Automatic exposure setting
Select between 4 patient sizes, 7 panoramic and 3 cephalometric programs to set automatically the correct exposures for the area of interest.



Smart sensor technology
Smart sensor technology with automatic Pan and Ceph recognition, and no risk of sensor dropping thanks to magnets.

Autofocus for detailed diagnoses
CdTe technology provides more than 4.200 differently focused images during a single panoramic exposure. Thanks to the autofocus tool, the software automatically moves to the layer most in focus, thus correcting blurred image areas without the need for additional exposures.

EXCELLENT IMAGE QUALITY
X-rays are directly converted to electrical signals for extraordinarily sharp images and lower patient dose.

EASY TO HANDLE
Automatic setting of correct exposure for the area of interest.

AUTOFOCUS FOR DETAILED DIAGNOSES
Up to 300 images per second allow to automatically move to the layer most in focus.



FONA XPan DG & FONA XPan DG Plus

INTUITIVE USE

Quick and intuitive exposure program selection for daily diagnosis.

COST EFFICIENT

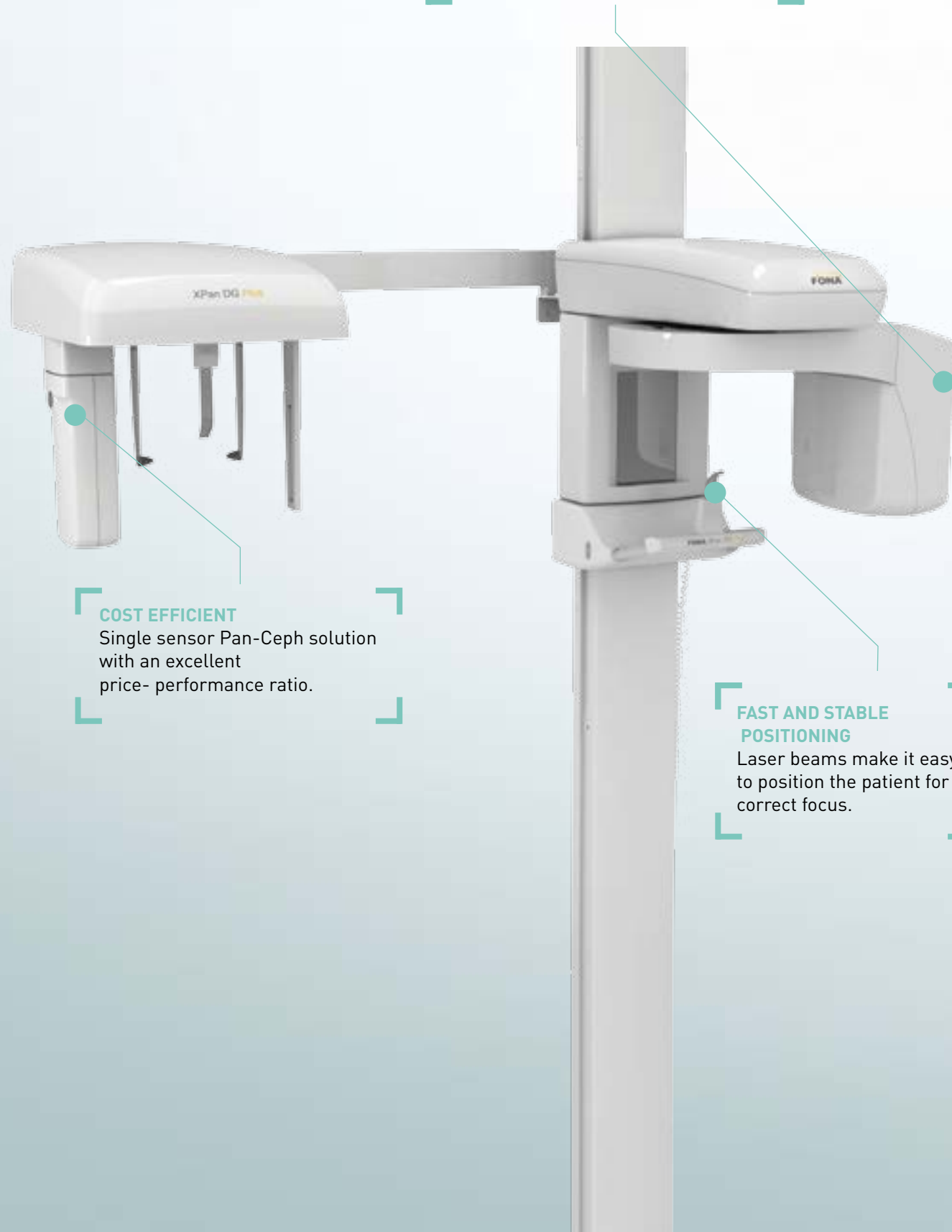
Single sensor Pan-Ceph solution with an excellent price-performance ratio.

FAST AND STABLE POSITIONING

Laser beams make it easy to position the patient for correct focus.

FONA XPan DG and its Ceph version XPan DG Plus are the perfect choice for dentists starting to equip their studio with digital imaging.

Their easy operation, comprehensive program range, reliable performance and high image quality give you a unit with an excellent price-performance ratio that saves valuable time and meets daily diagnostic needs.



Quick and intuitive program selection

Exposure parameters are easily set by selecting from 4 patient sizes, and 7 panoramic or 3 cephalometric programs.



Removable sensor technology

Meet the needs of panoramic and cephalometric images with just one sensor: a Pan-Ceph solution with an excellent price-performance ratio

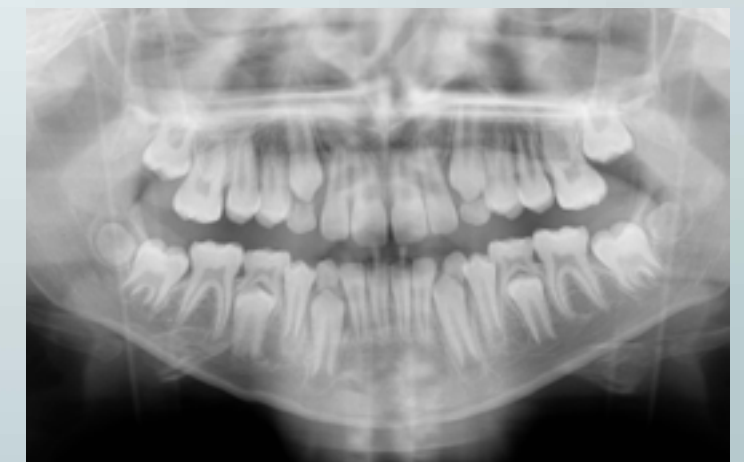


Easy and stable patient positioning

Position the patient perfectly with the help of laser beams. The face-to-mirror positioning with the bite block and optional head rest avoid patient movement, reducing the risk of blurring on the radiographic image.



Latero-Lateral (LL)



Child Panoramic

FONA XPan & FONA XPan Ceph

FONA XPan is a traditional panoramic unit with a flat cassette for film processing or storage phosphor plates for laser scanning with computed radiography.

It is a compact and reliable unit available as Pan solo or Ceph version. The X-ray generator features constant potential with high frequency electronics. The imparted dose is optimized during exposure and a thermal protection minimizes the waiting time.



Simple control panel for intuitive use

Self-explaining symbols permit immediate selection of correct program and patient size. Exposure parameters are automatically set but can be adjusted manually if desired..



Ergonomic patient positioning

Patients can be easily positioned with help of laser beams and a motorized system for carriage movement.



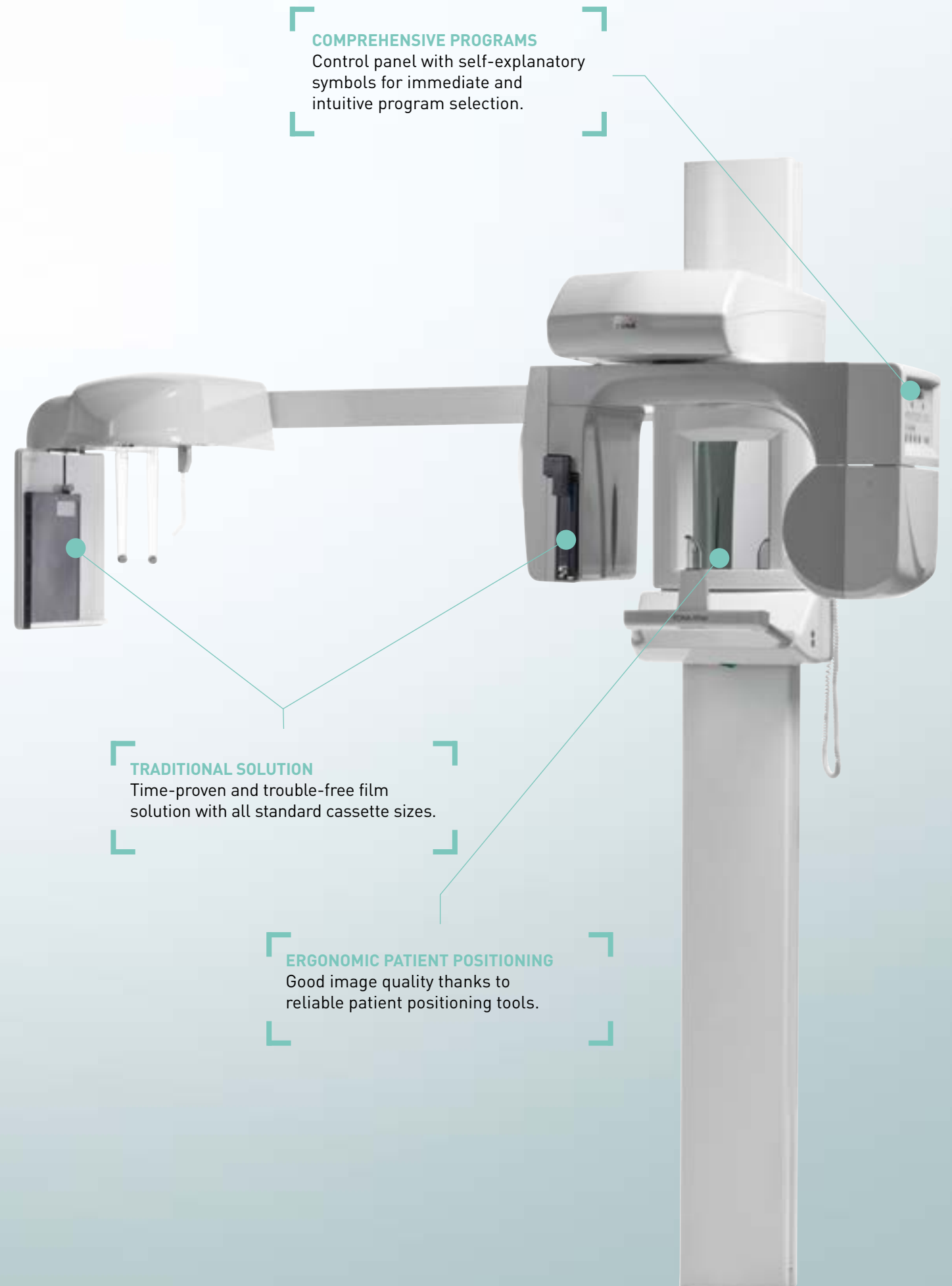
Ceph programs

Take lateral or frontal radiographs of the skull and wrist by simply rotating the tube head and selecting the appropriate beam collimating window..



Cassette Sizes

FONA XPan supports standard 15x30 cm cassette sizes for panoramic images, 18x24cm for ceph images and even 24x30cm for computed radiography.



COMPREHENSIVE PROGRAMS

Control panel with self-explanatory symbols for immediate and intuitive program selection.

TRADITIONAL SOLUTION

Time-proven and trouble-free film solution with all standard cassette sizes.

ERGONOMIC PATIENT POSITIONING

Good image quality thanks to reliable patient positioning tools.



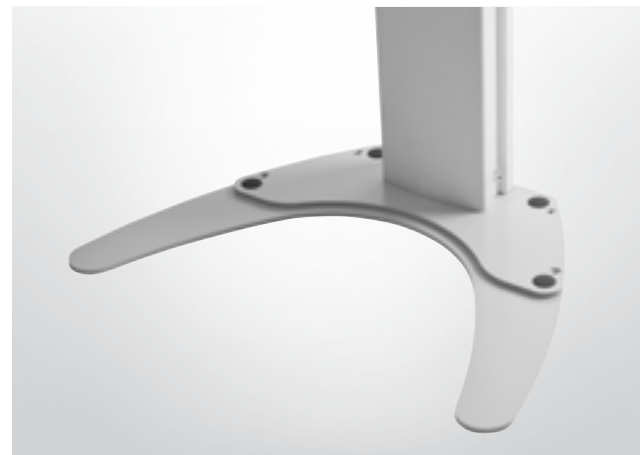
OrisWin DG Suite imaging software

Optimize your workflow by managing patient data, image visualization and enhancement all in one application. It is compatible with the entire digital FONA product range and, thanks to its bridging module and DICOM interface, it integrates perfectly into your existing dental studio network.



Patient positioning is made easy

Thanks to the bite block and optional chin rest, laser beams and frontal mirror. The patient's head can be stabilized with the optional headrest and the height of the unit can be easily adapted using the motorized column. Cephalostat and hand support for carpus are provided with the Pan Ceph model.



Wheelchair -accessible

Install your panoramic unit either wall mounted or on the optional free-standing base which is designed to be wheelchair-accessible.



Full installation flexibility

With the optional remote control, exposure can be released from outside the X-ray room, giving full installation flexibility.

	ART PLUS / ART PLUS CEPH	XPAN DG / XPAN DG PLUS	XPAN / XPAN CEPH
Sensor Technology	CdTe (Cadmium Telluride) CMOS	CCD sensor	-
Image Resolution	5 lp/mm	>5 lp/mm	-
Dynamic Range Pan / Ceph	16 bits	12 bits / 16 bits	-
Exposure Time Pan / Ceph	14.2 sec (max) / 8 to 10 sec	14.2 sec (max) / 8 to 10 sec	14.2 sec (max) / one shot
PC connection	Gigabit Ethernet	USB interface / Gigabit Ethernet	-
Focal Spot	0.5 (IEC 60336)	0.5 (IEC 60336)	0.5 (IEC 60336)
Tube Voltage	61 – 85 kV	61 – 85 kV	61 – 85 kV
Tube Current	4 – 10 mA	4 – 10 mA	4 – 10 mA
Weight Pan / Ceph	98 kg / 120 kg	98 kg / 120 kg	100 kg / 120 kg
Pan Programs	(1) Adult panoramic, (2) Child panoramic, (3) Left-Side Dentition, (4) Right-Side Dentition, (5) Anterior Dentition, (6) TMJ in normal occlusion and fully open, (7) Frontal view of Maxillary Sinus		
Ceph Programs	Antero-Posterior (AP), Latero-Lateral (LL), Carpus, Sub-Mento Vertex (SMV) in AP mode		Antero-Posterior (AP), Latero-Lateral (LL), Carpus
Patient sizes	(1) Large, (2) Medium, (3) Small, (4) Child		

